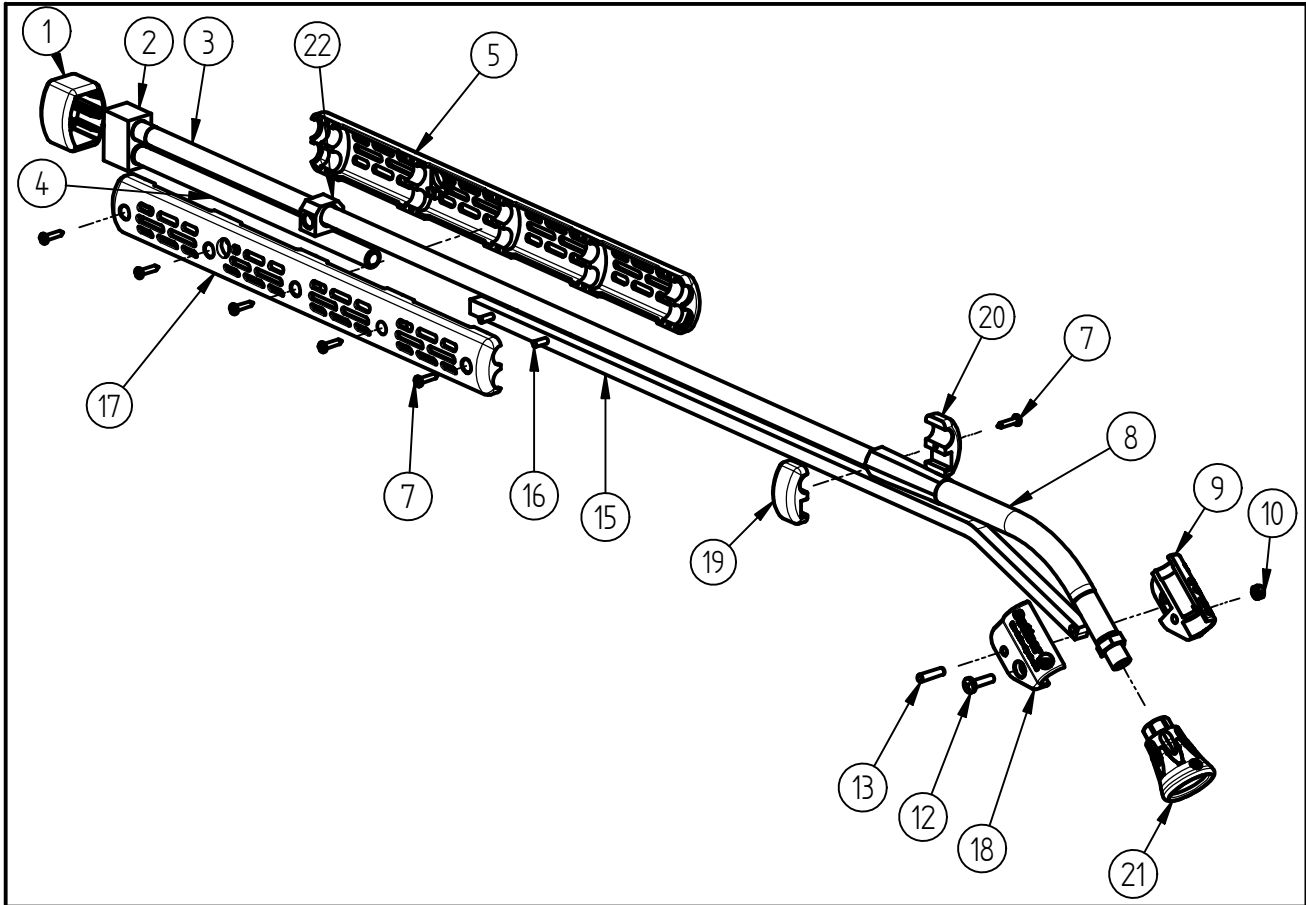


Spare Parts  
Lance "Push and Pull"  
Item-No. 20 0085 800



Pos.	Item-No.	Description	Pos.	Item-No.	Description
1	02 0002 770	Cover housing	17	02 0002 750	Semi casing (1)
2	01 0002 200	Housing	18	02 0007 510	Hose holder right
3	07 0007 6008		19	02 0002 780	Clamp (1)
4	07 0000 435	Lance 250mm	20	02 0002 790	Clamp (2)
5	02 0002 760	Semi casing (2)	21	20 0010 730	Nozzle protection grey - black
7	04 0000 051	Screw 3.5x16	22	01 0005 030	Bracket
8	20 0085 300	Hose			
9	02 0007 500	Hose holder left			
10	04 0002 865	Nut M5			
12	04 0002 870	Screw M5x16			
13	04 0002 880	Straight pin 5x20			
14	02 0007 530	Shrinkdown plastic tube			
15	03 0000 280	Aluminium bar			
16	04 0002 885	Straight pin 4x30			

### Repair-Kits

Pos.	Item-No.	Description	Pos.	Item-No.	Description
.					