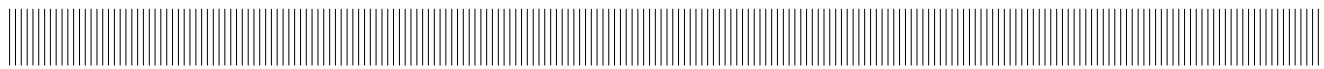


| | | | | |
|---|--|---|---------|----------|
|  | EQUIPAGGIAMENTI TECNICI LAVAGGIO | 29.0600.00 LP1 LAVAPAVIMENTI INOX STAINLESS STEEL FLOOR CLEANER | Ⓛ ⓖⓑ | 4 |
| | | | | 29/09/05 |

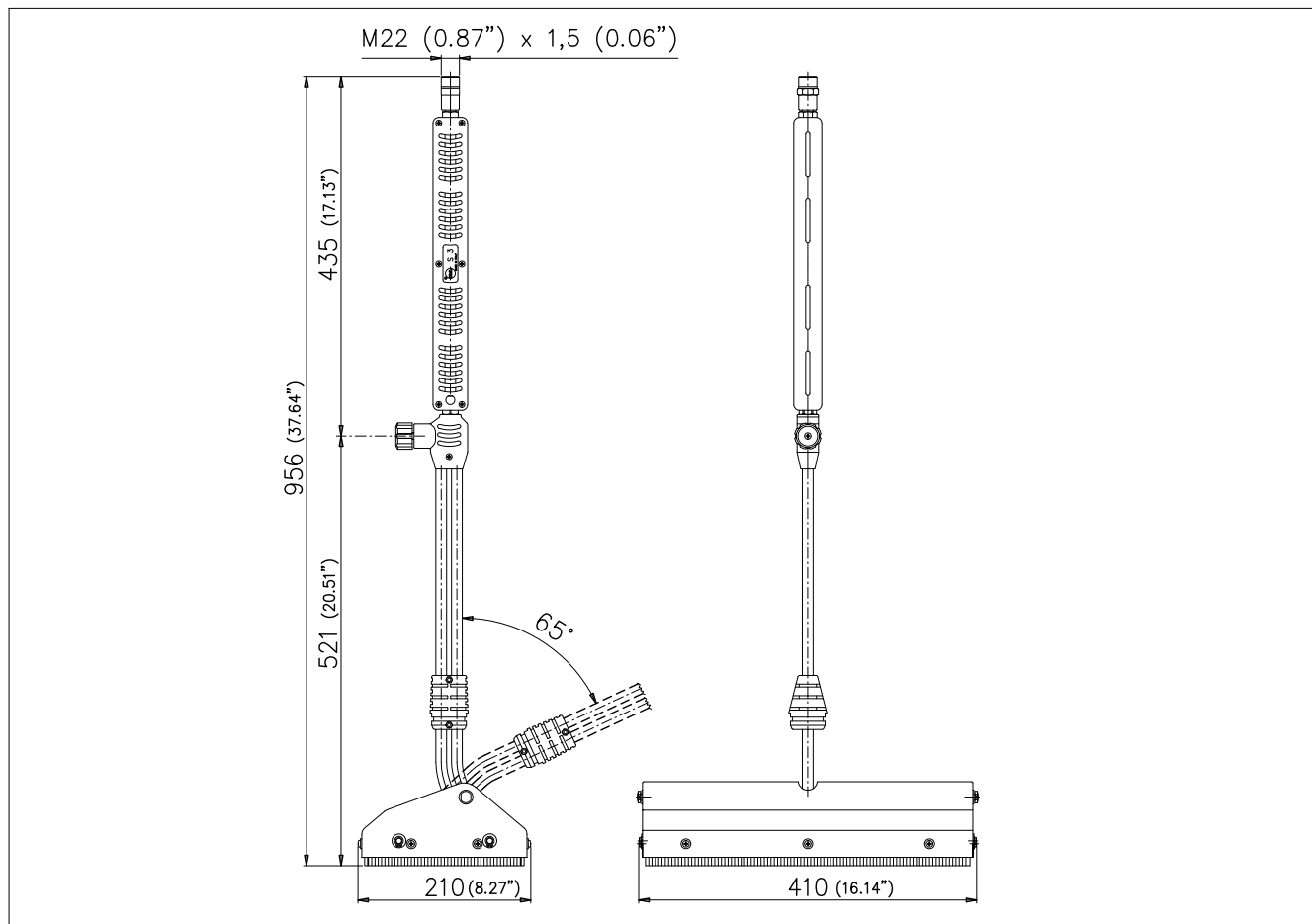
LP1



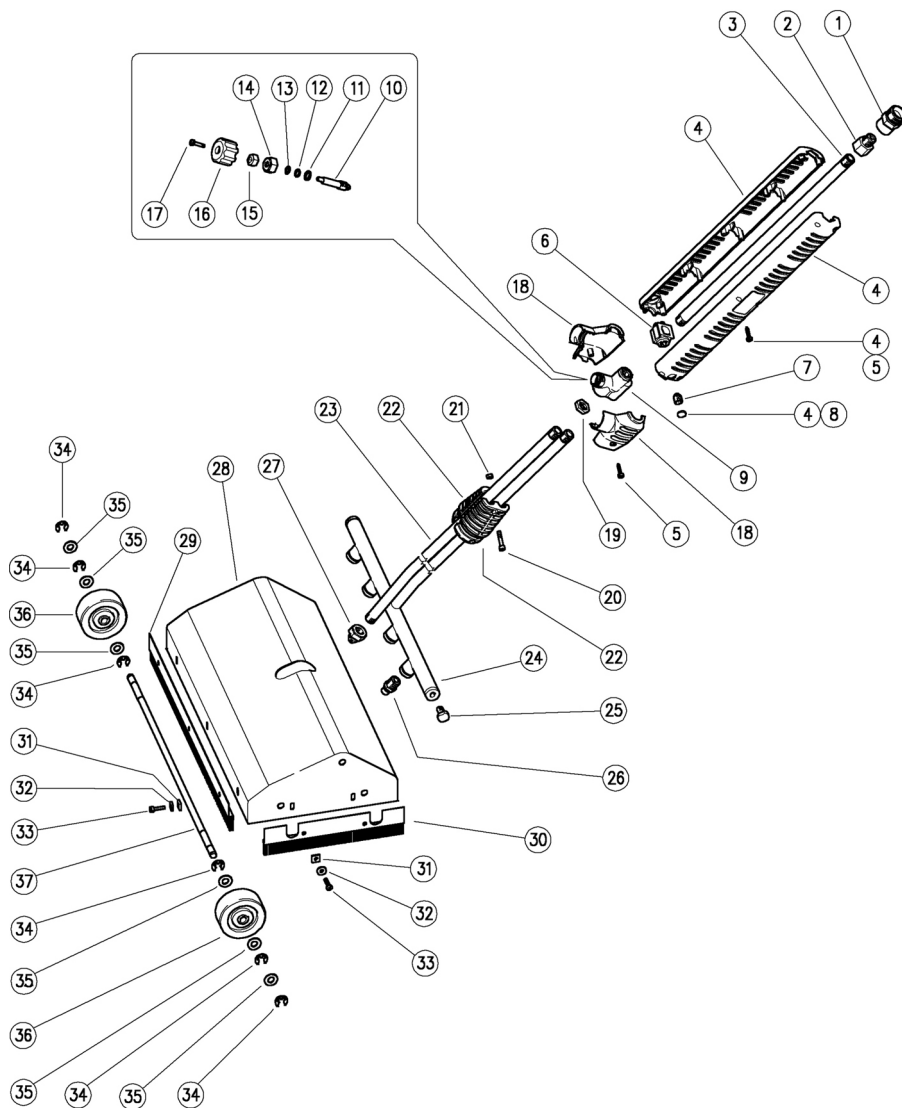
CARATTERISTICHE TECNICHE SPECIFICATIONS

| | |
|--|--|
| - PRESSIONE NOMINALE RATED PRESSURE | 250 bar – 25 MPa (3650 psi) |
| - PRESSIONE CONSENTITA PERMISSIBLE PRESSURE | 280 bar – 28 MPa (4050 psi) |
| - PORTATA MASSIMA MAX FLOW RATE | 20 l/min (5.3 USG p.m.) |
| - TEMPERATURA MASSIMA MAX WORKING TEMPERATURE | 160° C (320°F) |
| - LARGHEZZA DI LAVAGGIO CLEANING WIDTH | 400 mm |
| - UGELLI ALTA PRESSIONE NOZZLES HIGH PRESSURE | N° 4 1/4 NPT M 80015 Fattore Portata totale 06 |
| - UGELLI BASSA PRESSIONE NOZZLES LOW PRESSURE | N° 1 G1/4 F 120° Fattore Portata 50 |

MISURE D'INGOMBRO OVERALL DIMENSIONS



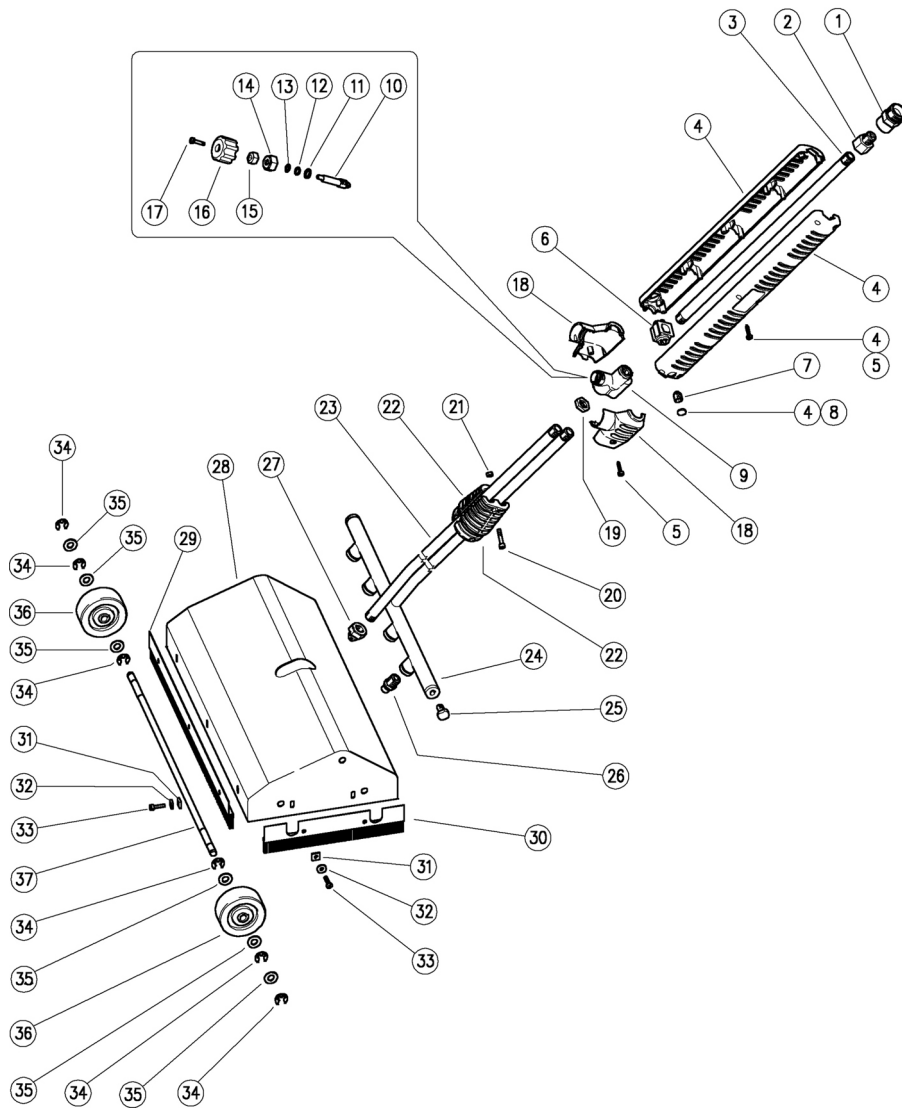
29.0600.00 LP1 lavapavim. inox, A M22, 410mm



| Pos. | Codice | Descrizione | Q.tà | K1 | K2 | K3 | K4 | Pos. | Codice | Descrizione | Q.tà | K1 | K2 | K3 | K4 |
|------|------------|--------------------------------------|------|----|----|----|----|------|------------|------------------------------|------|----|----|----|----|
| 1 | 26.1032.31 | AR5 A M22 nipplo a ghiera-G1/4F | 1 | | | | 25 | 20 | 16.1855.00 | Vite DIN912 M4x20 mm zinc. | 2 | | | | 10 |
| 2 | 40.5008.31 | Riduz.ott. Gc1/4M-G1/4F | 1 | | | | 10 | 21 | 11.4513.05 | Dado es. M4 | 2 | | | | 10 |
| 3 | 40.0314.56 | Tubo G1/4MM 377mm inox | 1 | | | | 10 | 22 | 41.0416.84 | Semiscocca 1/4" PA nera | 2 | | | | 10 |
| 4 | 40.0308.24 | Kit scocca S3 nera+viti+tappo lancia | 1 | | | | 1 | 23 | 29.0629.56 | Tubo bassa pressione inox | 1 | | | | 1 |
| 5 | 16.3077.00 | Vite autofil. DIN7981 3,5x18 mm | 7 | • | | | 10 | 24 | 29.0615.21 | Ramo alta pressione LP1 inox | 1 | | | | 1 |
| 6 | 40.0304.84 | Collare fissag.tubo plast. | 1 | | | | 25 | 25 | 29.0616.51 | Vite M8 inox | 2 | | | | 5 |
| 7 | 16.2230.00 | Grano DIN916 M10x8 mm zinc. | 1 | | | | 10 | 26 | 16.1380.15 | Ugello a.press. 1/4 +filtro | 4 | | | | 4 |
| 8 | 40.0303.84 | Tappo Lancia PA nero | 1 | | | | 10 | 27 | 29.0633.51 | Ugello bassa pressione inox | 1 | | | | 5 |
| 9 | 41.0401.35 | Corpo regol. LD G1/4 FFF ott. | 1 | • | | | 5 | 28 | 29.0605.21 | Scocca LP1 inox | 1 | | | | 1 |
| 10 | 41.0951.51 | Otturatore LD inox | 1 | • | | | 5 | 29 | 29.0601.23 | Spazz. 390 mm inox+PA bianco | 2 | | | | 5 |
| 11 | 14.3643.00 | Rosetta 8,2x12x1,5 mm Cu | 1 | • | | | 10 | 30 | 29.0602.23 | Spazz. 184 mm inox+PA bianco | 2 | | | | 5 |
| 12 | 10.3170.00 | An.OR 2,62x7,6 mm | 1 | • | | | 10 | 31 | 11.4512.00 | Dado quadro M4 | 10 | | | | 10 |
| 13 | 10.4020.00 | An. anties. 8x12,6x1,2 mm | 1 | • | | | 10 | 32 | 14.3514.00 | Rosetta 4,3x12x1 mm inox | 10 | | | | 10 |
| 14 | 41.0408.31 | Ghiera M18x1,5 ott. | 1 | • | | | 5 | 33 | 16.1840.10 | Vite DIN7985 M4x14 mm inox | 10 | | | | 10 |
| 15 | 29.0924.31 | Dado scanalato ott. | 1 | • | | | 10 | 34 | 10.0996.07 | An. elast. A 7 inox | 12 | | | | 25 |
| 16 | 29.0931.84 | Manopola PA nera | 1 | • | | | 10 | 35 | 14.3650.00 | Rosetta 8,4x17x1,6 mm inox | 12 | | | | 10 |
| 17 | 16.1840.00 | Vite DIN7985 M4x14 mm zinc. | 1 | • | | | 10 | 36 | 14.5060.06 | Ruota d.60 mm gomma | 4 | | | | 4 |
| 18 | 41.0424.24 | Kit scocca LD9-1/4" +viti | 1 | • | | | 1 | 37 | 29.0607.51 | Perno ruote 8x411 mm inox | 2 | | | | 2 |
| 19 | 29.0608.31 | Controdado G1/4F ott. | 1 | | | | 10 | | | | | | | | |

| Kit | Codice | Descrizione | Q.tà |
|-----|------------|------------------------------|------|
| K1 | 41.0956.24 | Kit regolat. LD9-LP completo | 1 |

29.0600.00 LP1 floor cleaner, sst, A M22, 410mm



| Pos. | P/N | Description | Q.ty | K1 | K2 | K3 | K4 | Pos. | P/N | Description | Q.ty | K1 | K2 | K3 | K4 |
|------|------------|---|------|----|----|----|----|------|-----|--|------|----|----|----|----|
| 1 | 26.1032.31 | AR5 A M22 screw-type nipple-1/4F Bsp | 1 | | | | | 25 | 20 | 16.1855.00 Screw, DIN912 M4x20 mm z.pl. | 2 | | | | 10 |
| 2 | 40.5008.31 | Reduct,brass 1/4M Bspt-1/4F Bsp | 1 | | | | | 10 | 21 | 11.4513.05 Hex. nut M4 | 2 | | | | 10 |
| 3 | 40.0314.56 | Tube, 1/4Bsp MM 377mm Sst. | 1 | | | | | 10 | 22 | 41.0416.84 Semi-shell, 1/4" PA black | 2 | | | | 10 |
| 4 | 40.0308.24 | Casing-kit -S3, black+screws+Lance Plug | 1 | | | | 1 | 1 | 23 | 29.0629.56 Low pressure tube, Sst. | 1 | | | | 1 |
| 5 | 16.3077.00 | S/tapping screw, DIN7981 3,5x18 mm | 7 | • | | | | 10 | 24 | 29.0615.21 High pressure branch -LP1, Sst. | 1 | | | | 1 |
| 6 | 40.0304.84 | Tube fastener, plast. | 1 | | | | | 25 | 25 | 29.0616.51 Screw M 8mm, Sst. | 2 | | | | 5 |
| 7 | 16.2230.00 | Set screw, DIN916 M10x8 mm z.pl. | 1 | | | | | 10 | 26 | 16.1380.15 Nozzle, 1/4 HP +strainer | 4 | | | | 4 |
| 8 | 40.0303.84 | Lance Plug, PA black | 1 | | | | | 10 | 27 | 29.0633.51 Low pressure nozzle, Sst. | 1 | | | | 5 |
| 9 | 41.0401.35 | Valve housing -LD, 1/4FFF Bsp brass | 1 | • | | | | 5 | 28 | 29.0605.21 Casing -LP1, Sst. | 1 | | | | 1 |
| 10 | 41.0951.51 | Shutter, LD Sst. | 1 | • | | | | 5 | 29 | 29.0601.23 Brush, 390 mm Sst.+PA white | 2 | | | | 5 |
| 11 | 14.3643.00 | Washer, 8,2x12x1,5 mm Cu | 1 | • | | | | 10 | 30 | 29.0602.23 Brush, 184 mm Sst.+PA white | 2 | | | | 5 |
| 12 | 10.3170.00 | O-ring, 2,62x7,6 mm | 1 | • | | | | 10 | 31 | 11.4512.00 Square nut M4 | 10 | | | | 10 |
| 13 | 10.4020.00 | Back-up ring, 8x12,6x1,2 mm | 1 | • | | | | 10 | 32 | 14.3514.00 Washer, 4,3x12x1 mm Sst. | 10 | | | | 10 |
| 14 | 41.0408.31 | Ring nut, M18x1,5 brass | 1 | • | | | | 5 | 33 | 16.1840.10 Screw, DIN7985 M4x14 mm Sst. | 10 | | | | 10 |
| 15 | 29.0924.31 | Groove nut, brass | 1 | • | | | | 10 | 34 | 10.0996.07 Snap ring, A 7 Sst. | 12 | | | | 25 |
| 16 | 29.0931.84 | Knob, PA black | 1 | • | | | | 10 | 35 | 14.3650.00 Washer, 8,4x17x1,6 mm Sst. | 12 | | | | 10 |
| 17 | 16.1840.00 | Screw, DIN7985 M4x14 mm z.pl. | 1 | • | | | | 10 | 36 | 14.5060.06 Rubber wheel, d.60 mm | 4 | | | | 4 |
| 18 | 41.0424.24 | Casing-kit -LD9-1/4" +screws | 1 | • | | | | 1 | 37 | 29.0607.51 Wheel shaft, 8x411 mm Sst. | 2 | | | | 2 |
| 19 | 29.0608.31 | Locknut, 1/4F Bsp brass | 1 | | | | | 10 | | | | | | | |

| Kit | P/N | Description | Q.ty |
|-----|------------|-----------------------------|------|
| K1 | 41.0956.24 | Valve-Kit -LD9-LP, complete | 1 |



P.A. S.p.A.

Via Milano, 13
42048 Rubiera, Reggio Emilia - Italy

Tel +39.0522.623611
Fax +39.0522.629600

info@pa-etl.it

www.pa-etl.it



COMPANY WITH QUALITY MANAGEMENT
SYSTEM CERTIFIED BY DNV
= ISO 9001 =