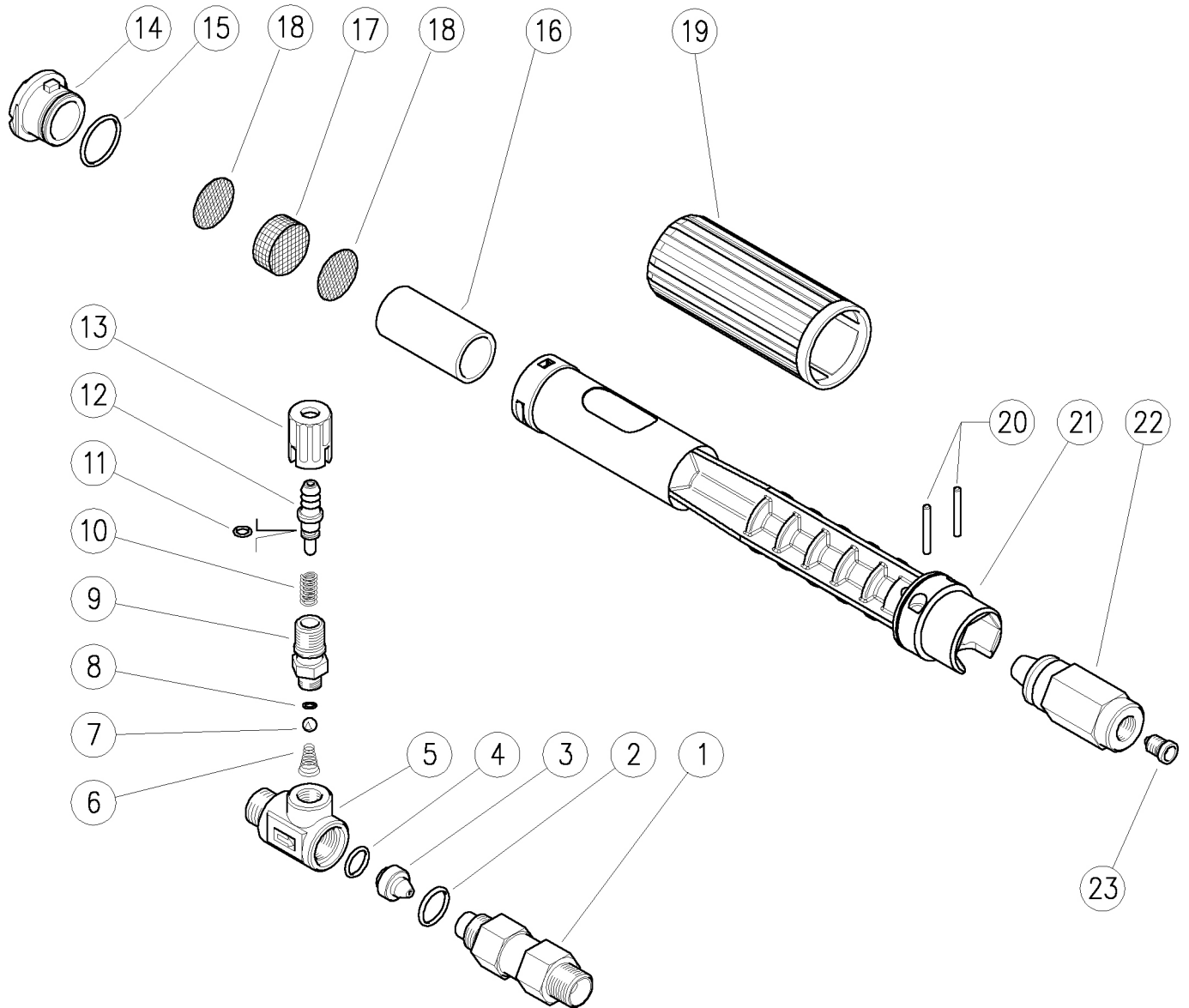


21.0600.12 Injector,adjust. 3/8MM Bsp 1,2mm  
 21.0600.14 Inject.,adj. 3/8MM Bsp 1,4mm extrn.red  
 21.0600.18 Inject.,adj. 3/8MM Bsp 1,8mm extrn.blue  
 21.0600.21 Inject.,adj. 3/8MM Bsp 2,1mm extrn.blue  
 25.1845.18 LS12asp.e Foamer 1,8mm+ext.inje.1,2-black  
 25.1845.21 LS12asp.e Foamer 2.1mm+ext.inject.1,4-red

25.1845.25 LS12asp.e Foamer 2.5mm+ext.inject.1,8-blue  
 25.1851.18 LS12 asp.e Foam lance exter.suct. 1,8-black  
 25.1851.21 LS12 asp.e Foam lance exter.suct. 2,1mm  
 25.1851.68 LS12 asp.e Foam lance exter.suct. 1,8-black  
 25.1851.71 LS12 asp.e Foam lance exter.suct. 2,1mm  
 25.1851.75 LS12 asp.e Foam lan.exter.suct. 2,5-blue



		K1K2K3K4						K1K2K3K4					
1	21.0602.31R Tapered coupling, 3/8MM Bsp	1				3	13	21.0178.84R Inject.knob, 1/4F Bsp blue (4,3)	1				10
2	10.3179.10R O-ring, 2,62x13,94 mm Vi 70	1				10	14	25.1802.85R Front nozzle -LS10-12 black v.2 (1,5)	1				10
3	21.0507.51R Inject.nozzle, D.15 - 1,2 mm Sst. (1)	1				5	14	25.1814.84R Front nozzle -LS10-12 red (2)	1				5
3	21.0508.51R Inject.nozzle, D.15 - 1,4 mm Sst. (2)	1				5	14	25.1814.85R Front nozzle -LS10-12 red v.2 (2,6)	1				5
3	21.0504.51R Inject.nozzle, D.15 - 1,8 mm Sst. (3)	1				5	14	25.1827.85R Front Nozzle LS10 plastic blue (3,7)	1				10
3	21.0505.51R Inject.nozzle, D.15 - 2,1 mm Sst. (4)**	1				5	15	10.3072.10R O-ring, 1,78x20,35 mm Vi 70	1				10
3	21.0506.51R Inject.nozzle, D.15 - 2,3 mm Sst. **	1				5	16	25.1831.85R Spacer ring -LS12	1				5
4	10.3174.10R O-ring, 2,62x9,93 mm Vi 70	1				10	17	25.1808.51R Pressed strainer,25x10mm Sst.	1				10
5	21.0601.35R Inject.housing, 3/8MF Bsp brass	1				3	18	29.0802.53R Diaphragm, 25x0,5 mm Sst.	2				10
6	21.0160.51R Tapered spring, Sst. -inject.	1				10	19	25.1805.84R Knob -LS12	1				5
7	14.7420.01R Ball, 7/32" Sst. Aisi 316	1				10	19	25.1805.85R Knob -LS12 v.2 (5,6,7)	1				5
8	10.3049.00R O-ring, 1,78x5,28 mm Vi 70	1				10	20	30.0509.31R Parallel pin, 5x24,5 mm brass	2				10
9	21.0173.31R Coupling, M12x1-1/4M Bsp brass	1				10	21	25.1801.85R Lance housing -LS12 v.2	1				5
10	21.0158.51R Spring, 0,8x7x15 mm Sst.	1				10	22	25.1836.31R Injector housing -LS12asp.e	1				3
11	10.3043.01R O-ring, 1,78x4,48 mm Vi 70	1				10	23	21.0007.51R Nozzle, M8x1 - 1,5 mm Sst.	1				10
12	21.0155.99R Hose barb, d.8 mm brass+o-ring	1				5	23	21.0002.51R Nozzle, M8x1 - 1,8 mm Sst. (1)	1				10
13	21.0171.84R Inject.knob, 1/4F Bsp black (1)	1				10	23	21.0004.51R Nozzle, M8x1 - 2,1 mm Sst. (2)	1				10
13	21.0174.84R Inject.knob, 1/4F Bsp red (2)	1				10	23	21.0009.51R Nozzle, M8x1 - 2,5 mm Sst. (3)	1				10

\*\*  
 (1) 25.1845.18 (2) 25.1845.21 (3) 25.1845.25 (4) 21.0600.21 (5) 25.1851.68 (6) 25.1851.71 (7) 25.1851.75