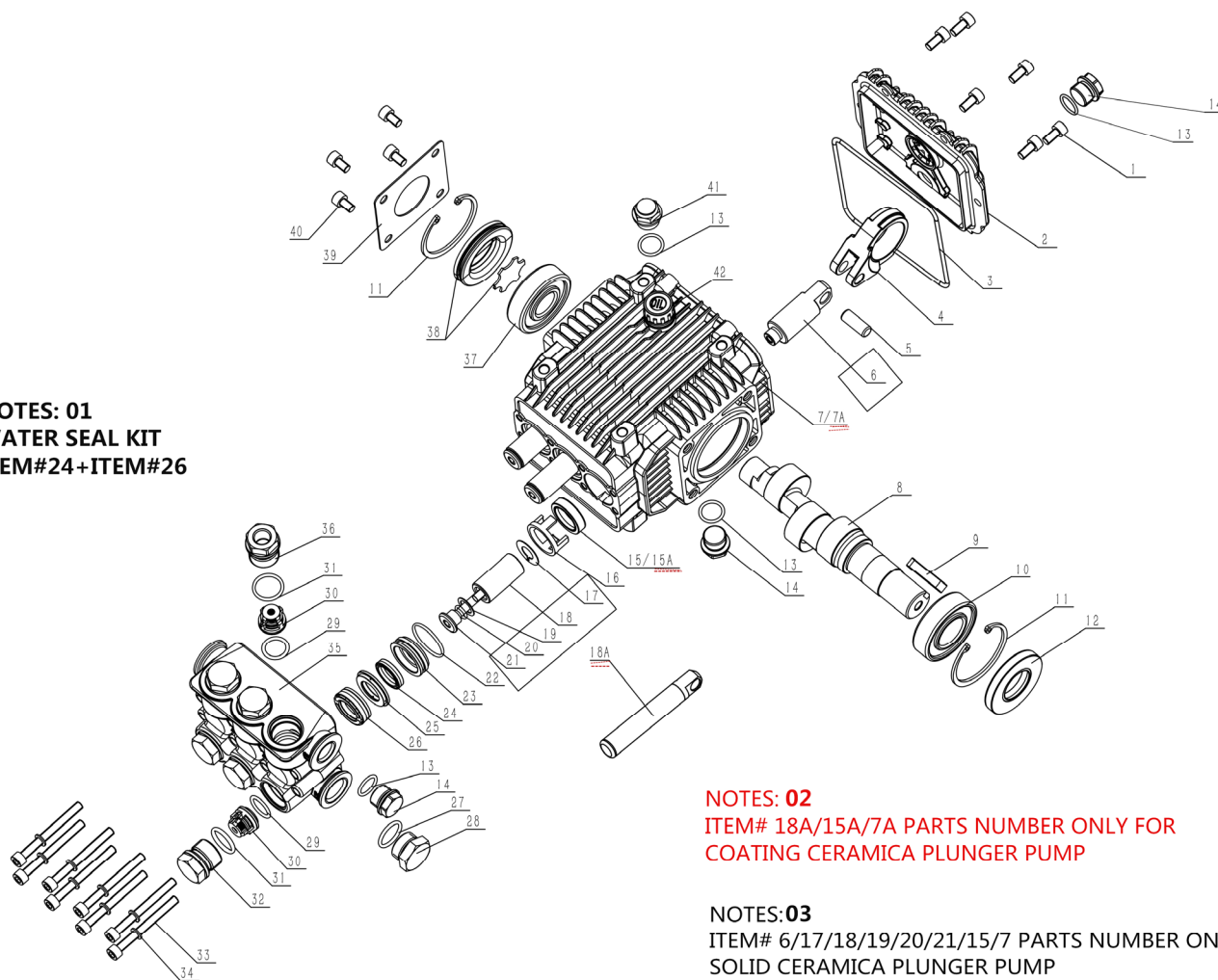


# BMSparePartsQuoteList(SOLIDCERAMICPLUNGERPUMP)

IssuedBy:Botuolini

Dateupdated:28th,May.2019

**NOTES: 01**  
**WATER SEAL KIT**  
**ITEM#24+ITEM#26**



**NOTES: 02**  
**ITEM# 18A/15A/7A PARTS NUMBER ONLY FOR**  
**COATING CERAMICA PLUNGER PUMP**

**NOTES:03**  
**ITEM# 6/17/18/19/20/21/15/7 PARTS NUMBER ONLY FOR**  
**SOLID CERAMICA PLUNGER PUMP**

Номер	Артикул	Описание	Кол-во
BM-1	590201014	Hexagon screw	6
BM-2	301030101	BM Rear Cover	1
BM-3	590101011	O-ring	1
BM-4	500102200	BM Connecting Rod	3
BM-5	500102240	BM Pin of plunger	3
BM-6	500102100	BM plunger lever	3
<b>BM-7A</b>	<b>500102020</b>	<b>BM Crankcase-A</b>	<b>1</b>
BM-7	500102030	BM Crankcase	1
<b>BM-8</b>	<b>500102360</b>	<b>BM15 Solid Crankshaft 24mm(Tor)</b>	<b>1</b>
BM-9	500011001	Flat key	1
BM-10	590302002	6205 Needle Bearing	1
BM-11	590205005	Circlip,52-A	2
BM-12	590108002	Crankshaft Oil Seal	1
BM-13	590101019	O-ring	4
BM-14	500010001	BM Dipstick Gap	3
BM-15	590107003	Oil Seal - 20*28*7	3
<b>BM-15A</b>	<b>590107002</b>	<b>Oil Seal - 18*28*7</b>	

BM-16	500102050	BM 18MM Oil Seal Bracket	3
BM-17	500102150	BM WIPER	3
<b>BM-18A</b>	<b>500102070</b>	<b>Ceramic coating plunger</b>	<b>3</b>
BM-18	500102110	Solid Ceramic Tube	3
BM-19	500102210	BM sheet gasket	3
BM-20	590101105	O-ring	3
BM-21	500102220	Locking bolt	3
BM-22	590101063	O-ring	3
BM-23	500101050	BM18MM Guide Ring	3
BM-24	590105002	BM18 Aux. Water Seal	3
BM-25	500101080	BM Support Ring	3
BM-26	590104008	BM18 Main Water Seal	3
BM-27	590101035	O-ring	1
BM-28	500010002	BM 1/2 Plug	1
BM-29	590101023	O-ring	6
BM-30	500101150	BM Checkign Valve-A(7-19L/min)	6
BM-31	590101042	O-ring	6
BM-32	500101100	BM Valve Nut	5
BM-33	590201007	Hexagon screw	8
BM-34	590204102	Washer D6	8
BM-35	500101020	BM Cylinder	1
BM-36	500101100	BM Valve Nut9(with hole)	1
BM-37	590302004	Ball Bearing 6304	1
BM-38	301210101	BM Side Oil Indicator	1
BM-39	500102230	BM Side Plate	1
BM-40	590201016	Hexagon screw	4
BM-41	101702010	Oil plug	1
BM-42	301150101	Oil leveler	1